

Arkansas Basin Implementation Plan Watershed Health

Formation of a Watershed Coalition

Arkansas Basin Roundtable
November 12, 2014

Presented by: Mark Shea, Colorado Springs Utilities
 Carol Ekarius, Coalition for the Upper South Platte and COCO
 Sarah Mayben, USDA Forest Service - PSICC

BACKGROUND

Catastrophic wildfires 2012-2013

Colorado Water Conservation Board (CWCB) and State Water Plan

Watershed Health as part of Basin Implementation Plans (BIP)



WATERSHED HEALTH

“Forested watersheds are the natural forebays of Colorado’s water supply” Colorado Water Plan

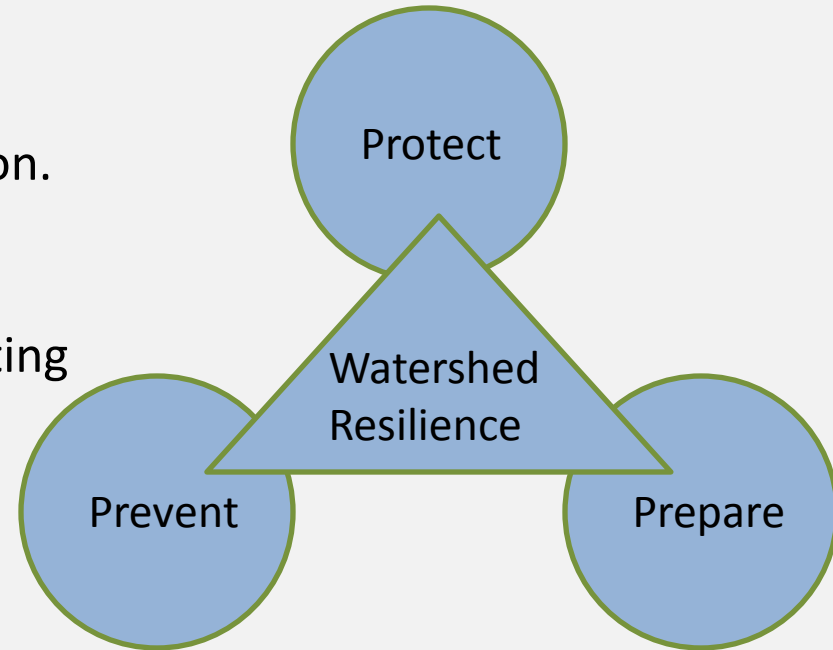
Colorado’s Water Plan:

Watershed health is broadly defined as a measure of ecosystem structure and function.

Arkansas BIP:

Watershed Health Planning is about protecting the functional integrity of the hydrologic, biologic, physical and built environment depended on for water supply and quality.

Build resiliency of social and ecological systems to watershed health risks.



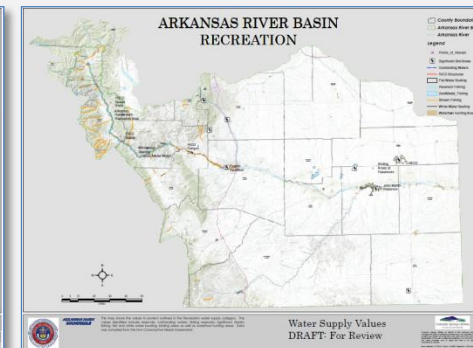
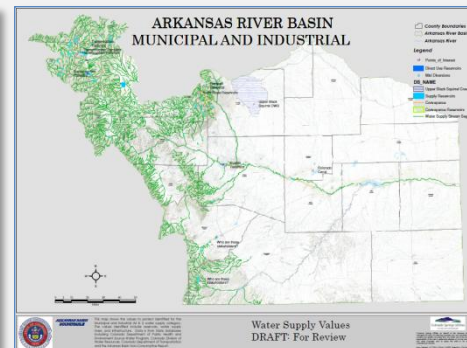
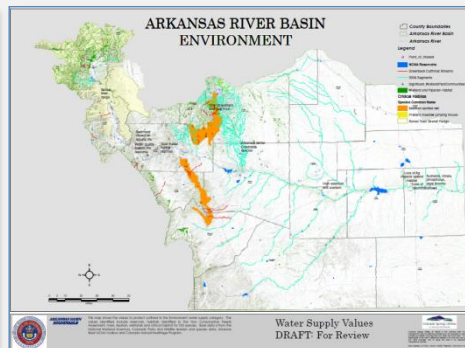
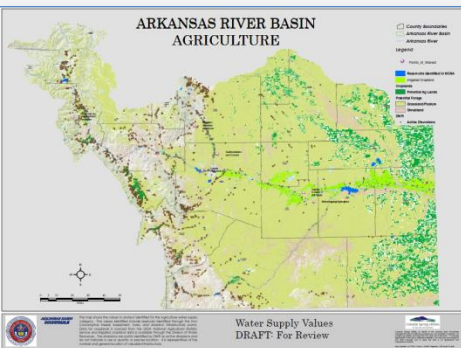
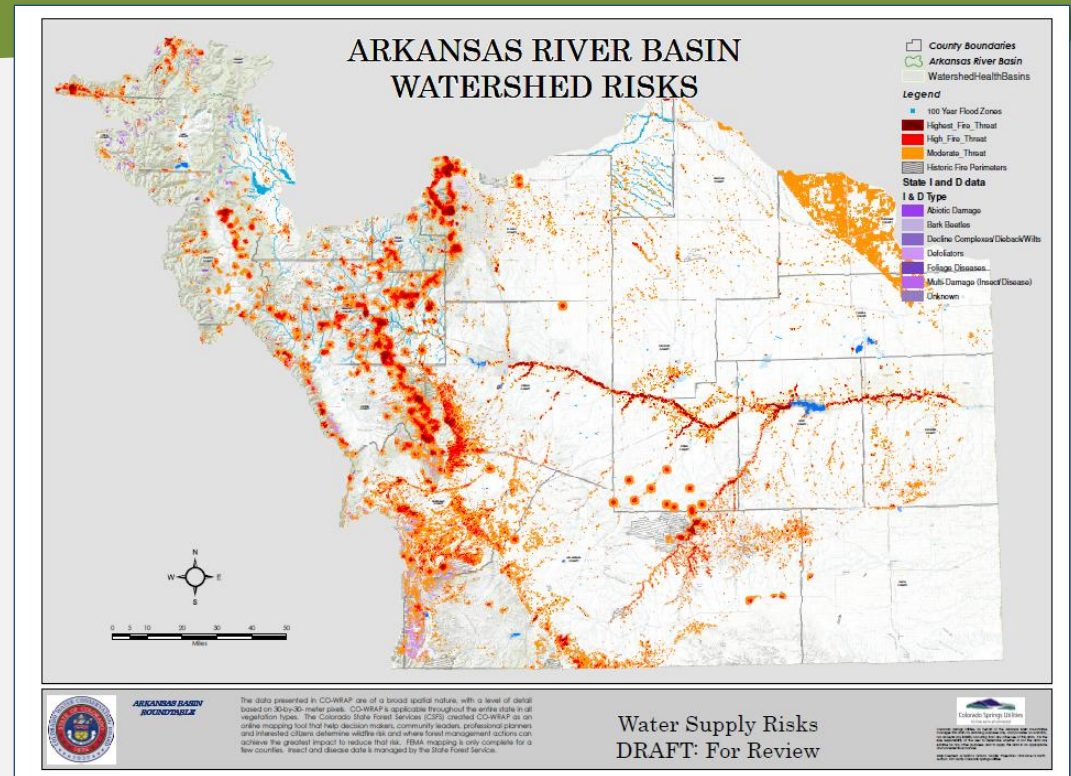
ARKANSAS BASIN BIP WATERSHED HEALTH

Formed of a working group

Shared lessons learned

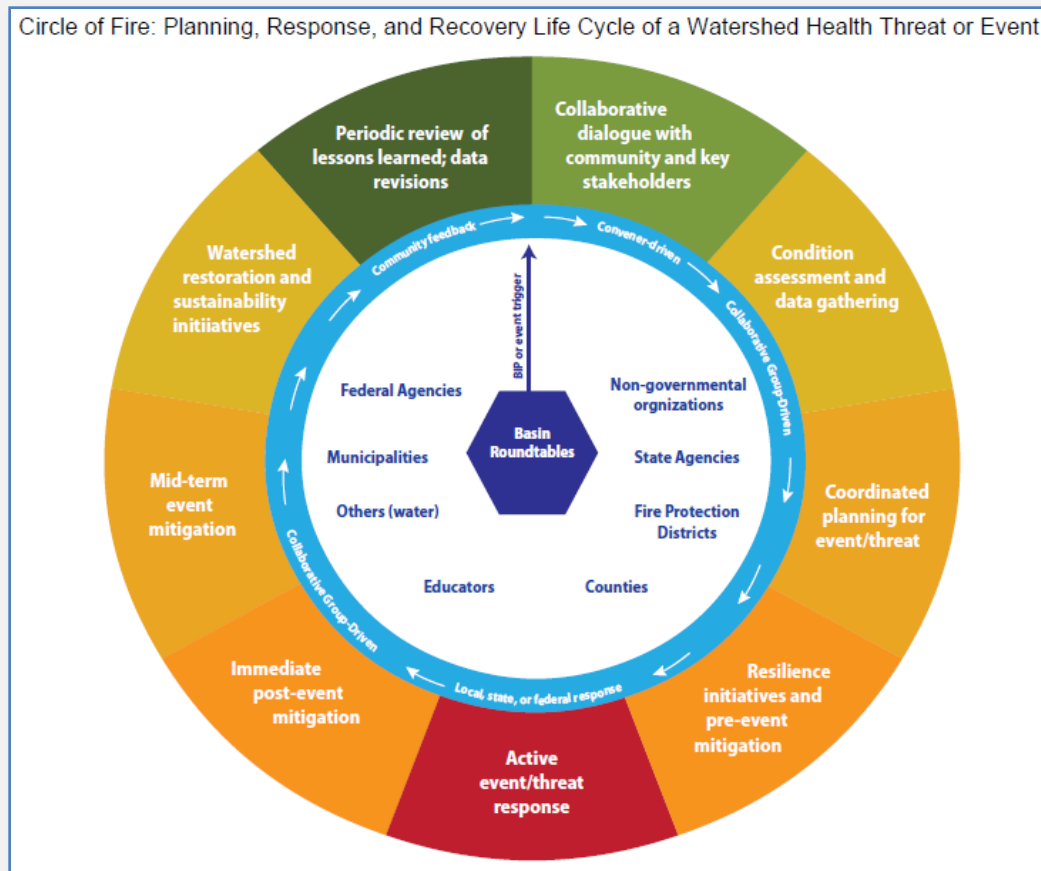
Identified watershed health
issues and risks

Developed a “toolkit” of best
practices



KEY CONCLUSIONS

Collaboration, planning and data are critical paths to addressing watershed health issues.



BIP RECOMMENDATION

Support the formation of watershed coalitions and a basin wide collaborative.

NEEDED STEPS:

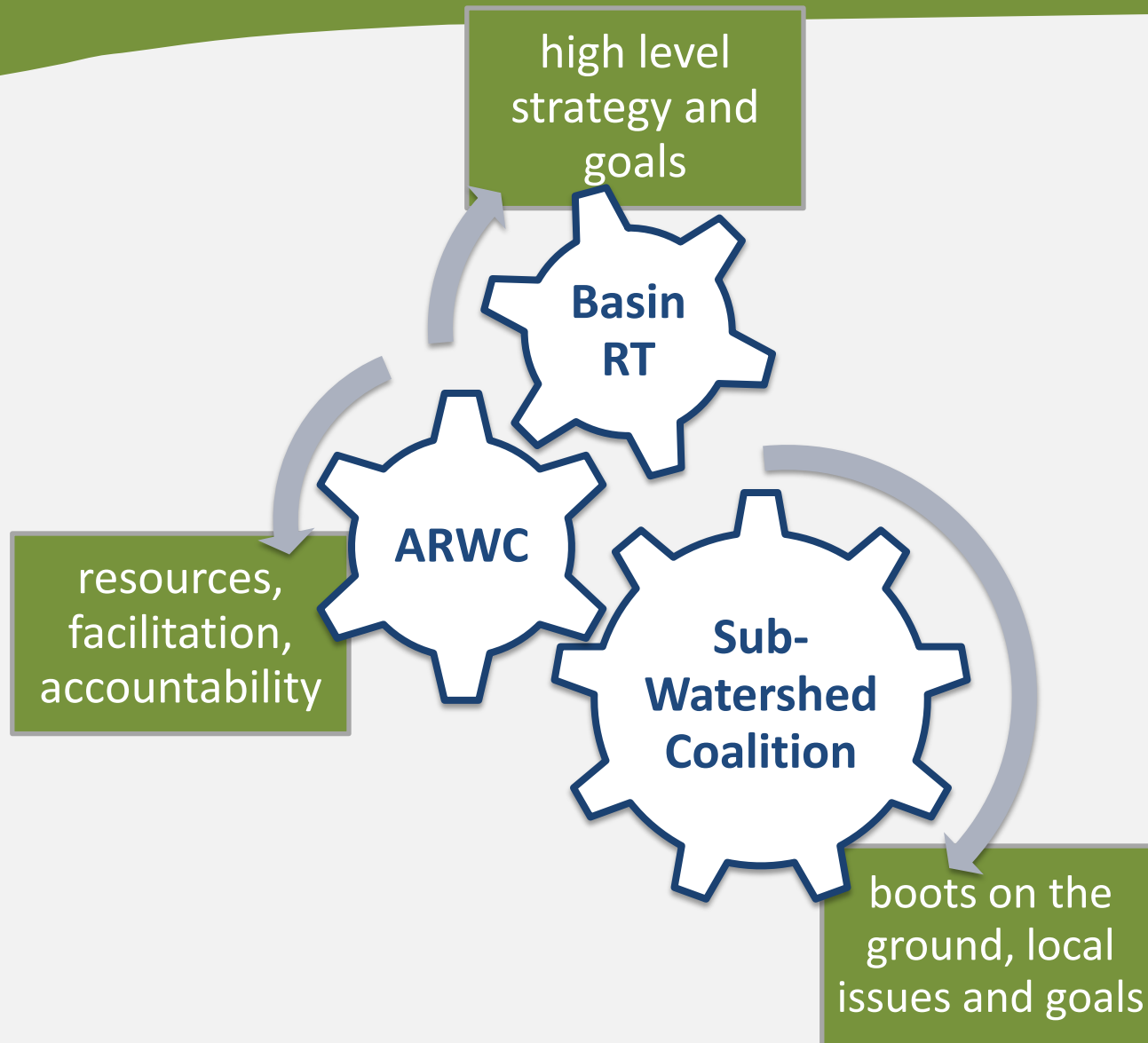
Convening interested stakeholders

Establish long-term leadership, to maintain momentum and collaboration

Build framework for watershed collaborative and coalitions



COLLABORATIVE STRUCTURE



COALITIONS & COLLABORATIVES

Support new, emerging and existing coalitions and collaboratives by:

Bringing together stakeholders

Help form a dynamic network

Foster cooperative efforts based on best available science, community values and economic sustainability



CONCLUSION

TASK	RESPONSIBLE PARTY	TIMELINE
Formation of ABRT sub-committee	ABRT	Dec. 2014
Establish core team from RT members, watershed health working group and essential stakeholders	ABRT sub-committee sponsor(s)	Dec. -Jan.2015
Present WSRA grant and match contributions to ABRT	Arkansas River Watershed Collaborative (ARWC)	Jan. 2015
Submit WSRA grant to CWCB	ARWC	Dec.-March.2015
Select facilitator for collaborative formation	ARWC	0-3 months
Solidify collaborative framework and sustainable funding	ARWC/ABRT	0-1 year